

News from the Stow Historical Society

A newsletter for all friends of Stow history. Please feel free to pass it along to others who might be interested!

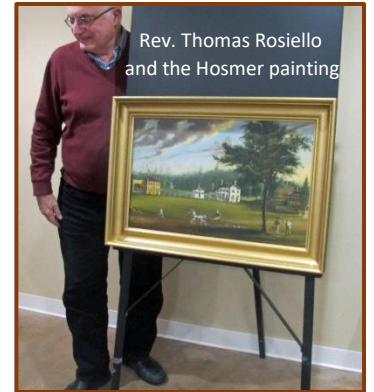
SAVE THESE DATES
page 4

March 14, 2017

Happenings in Stow!

November 2016: The SHS returned the restored **Louisa Paine Hosmer painting** to First Parish Church of Stow and Acton. The SHS had commissioned Bruce Wood of the Woodshed Gallery, Franklin, MA to restore the early-1800's painting to its former glory. This restoration was initiated by Barbara Sipler's dedication to preserving town treasures.

FUTURE PROGRAM: The SHS would like to host a program featuring this painting and Hosmer's second painting of the *View of the Lower Common* led by a landscape art historian.



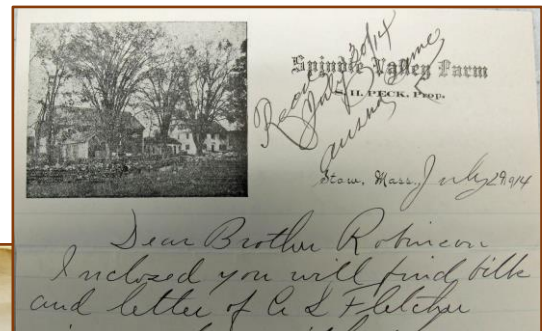
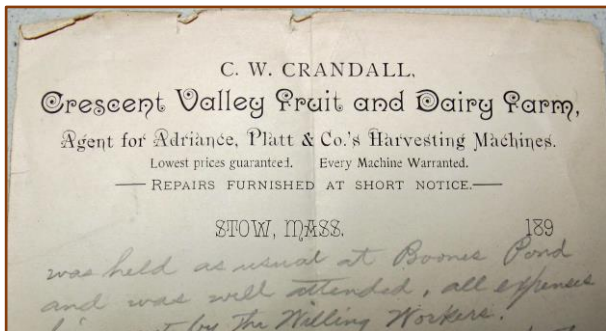
Rev. Thomas Rosiello and the Hosmer painting

SHS is seeking a landscape art historian from our greater area. Can anyone guide us?

.....

December 2016: Through an agreement between the Stow Historical Commission and the trustees of the **Union Church**, which was dissolved, all the church's documents were boxed and brought to the Town Vault. Stow's Ancient Documents Committee will be sorting and cataloging for many more months. Priceless historical documents are now secure. Letters with local business headings were among the correspondence.

Here are three enjoyable examples of stationery from Stow farms of the past century.



2017 Musings:

#1

A Research Connection between Barnet, VT and Stow, MA

The SHS was contacted by Kathleen Monroe of W. Barnet, VT, who was writing a book about Barnet, Vermont legends.

Oral history of the Town of Barnet stated that the town was named after the English town from which the Stevens ancestors came. SHS's research led to Deptford. Both towns are on the outskirts of London: one NW and the other SE. **Barnet? Or Deptford?**

The Stevens Family: Siblings, Thomas, Mary and Cyprian Stevens of Deptford/Barnet, England, arrived in Charlestown, MA about 1660. Thomas lived with the ruling elder, John Green, of the First Church, Charlestown. He married the elder's daughter, Mary, in 1661. Within a year, Thomas and Mary were living in Sudbury. Cyprian married, first living in Concord and then in Lancaster.

- **NOTE:** Mary Green was the sister of Capt. John Green, which Stow's lore has speculated might have been the Regicide, Lord Goffe.
- Thomas and Mary Stevens lived in Sudbury and relocated to Stow after the devastating years of King Philip's War. Stow's 1681 town records listed Thomas Stevens of Sudbury as receiving *lott* #6 of the Pompositticut Plantation. Here Thomas partnered with Thomas Gates and John Butterick to operate a sawmill and gristmill. His son, Thomas, Jr., was assigned a *lott* in 1684. Thomas died in Stow on August 19, 1704. Thomas' unmarked grave is in Lower Village Cemetery.
- Cyprian's ancestors headed North into Vermont. Enos Stevens, Cyprian's great, great grandson, was one of the original grantees of Barnet, VT.

Where were the Stevens from? In Proceeding of the Vermont Historical Society 1901-1902 (page 38), the president of the VHS, Benjamin Franklin Stevens (Cyprian's g-g-g-great grandson), stated Deptford.

End of a legend!

#2

SHS also received an inquiry about the **early 1700's births of the Stephen Farr family**. Interestingly, both Stephen Farr and Thomas Stevens were recorded in attendance at the June 10, 1700 Stow Town Meeting.

Stow Births 1717-1719



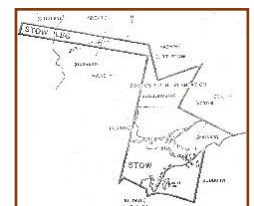
#3



Another inquiry requested assistance in locating documentation for D.A.R. certification for **Jabez Walcott** and **Jacob** and **Abraham Whitney's** participation in the American Revolution.

#4

Then there is the **Stow Leg**, which Francis Warren ably studied in the 1970's. Writer and columnist, David Mark of Maynard, has been deeply researching the archives of the towns of Shirley, Harvard, Groton, Littleton and Stow and the Massachusetts Historical Society, for primary documents for his research on *THE INCREDIBLE SHRINKING STOW: How Stow Lost Land and People to Surrounding Towns*. He will be a guest speaker at the Randall Library on this topic on Thursday, May 11, 2017.



#5

The Pompositticut School's Bicentennial Time Capsule



Pompositticut School's

Mrs. Nancy Kyle's
3rd Grade



1976

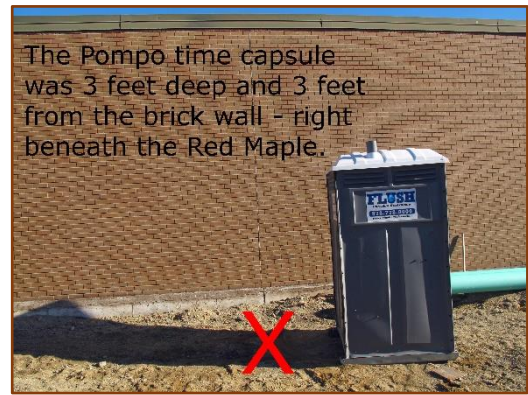


Bicentennial Time Capsule

July 17, 2015 was the day before Pompositticut School was closed to the public and the search was on for the time capsule. Location? It was most likely buried in the roots of the Red Maple.



The construction company located the time capsule late September 2015.



The Pompo time capsule in the construction trailer.



2017: There is a strong interest in opening the 3rd grade capsule.

- Let's locate Pompo students of 1976.
- Let's learn how to open a sealed capsule.
- Let's plan a town "opening" celebration.

Contact: info@stowhistoricalsociety.org



The Pompo time capsule on display at the Pompositticut Community Center Open House, February 11, 2017

Stow's Spring Programming

Sunday March 19, 2017

3 PM

Hale School

SOUNDS OF STOW Chorus and Orchestra perform Mozart, Gjeilo and Lauridsen

<http://soundsofstow.org/season/>



Sunday May 7, 2017

2:00-3:30 PM

Carver Hill Orchard and Farm

STOW'S HIDDEN TREASURE 2017

Freedom's Way National Heritage Area

Sponsored by the SHS, SHC, SCC, and SCT

<http://www.discoverhiddentreasures.org/> (website under construction)



Thursday May 11, 2017

7:00-8:00 PM

Randall Library

THE INCREDIBLE SHRINKING STOW:

How Stow Lost Land and People to Surrounding Towns

Guest speaker, David A. Mark, Maynard writer and columnist

Sponsored by Randall Library and the SHS



May 13, 2017

10:00-4:00 PM

Center School

Visit the SHS and SHC's table in the gym/cafeteria



**SpringFest's
50th
Anniversary**

May 14, 2017

4 PM

First Parish Church of Stow & Action

SOUNDS OF STOW - 44th Annual SpringFest: A Celtic Celebration

<http://soundsofstow.org/season/>



Encompassing forty-five communities in North Central Massachusetts and Southern New Hampshire, Freedom's Way National Heritage Area (FWNHA) was established by Congress in 2009 to foster a close working relationship between local and regional partners, governmental agencies, and the private sector to preserve the special historic identity of the region.

<http://www.discoverhiddentreasures.org/>

Celebrate the HIDDEN TREASURES of North Central MA and Southern NH during the month of May 2017.

This is Stow's 3rd year featuring a HIDDEN TREASURE.

Saturday, May 7, 2017

Carver Hill

2-3:30 PM



Photo credit: Tom Cmejla, Drone Skyworks

Tucked off a main road in Stow, Carver Hill Orchard is truly a hidden treasure. Seasonally, it offers an old-time apple-picking and produce experience. Today, this working farm and apple cider mill property is more than 100 years old.

Yet, the farm's history dates back nearly 285 years to a sawmill and tannery on Elizabeth Brook, the early life-blood of Stow. This scenic land abounds with natural history, including the historic mill dam and pond, a drumlin and an incredible glacial rock formation.

A tour of this 80-acre orchard led by the Stow Conservation Commission, Stow Historical Society, Stow Historical Commission, and Stow Conservation Trust will afford visitors a unique opportunity to immerse themselves in local history, conservation and geology. Participants should wear comfortable walking or hiking shoes.

<http://www.discoverhiddentreasures.org/> (website under construction)



Photo credit: Kathy Sferra



Photo credit: Tom Cmejla, Drone Skyworks

SEEKING volunteers for SHS planning, programming and website development!

Contact: info@stowhistoricalsociety.org