

News from the Stow Historical Society

A newsletter for all friends of Stow history.
Please feel free to pass it along to others who might be interested!

September 12, 2018

The SHS's September Program

Amelia Earhart at West School

Check out page 3
- Stow's Camp
Pompositicut!



Sunday,
September 23rd
3 PM

Actress Sheryl Faye presents a one-woman show
about ***Amelia Earhart: Pioneer of Aviation.***

This entertaining and educational historical performance
is sponsored by the Stow Cultural Council and the SHC
and SHS. It is open to all ages.

Refreshments will be served
at the end of the program.



Sheryl Faye



Actress Sheryl Faye presents a one-woman show about **Amelia Earhart: Pioneer of Aviation**, which was written by Joan Schaeffer.

As West School's illustrious scholar, Willena Peck, began practicing medicine in the early 20th century, Amelia Earhart was also considering a career in medicine.

This was true until Amelia paid a pilot for a short *hop* in his plane!

<http://sherylfaye.com/historicalwomen/sheryl-faye-performs-amelia-earhart/>



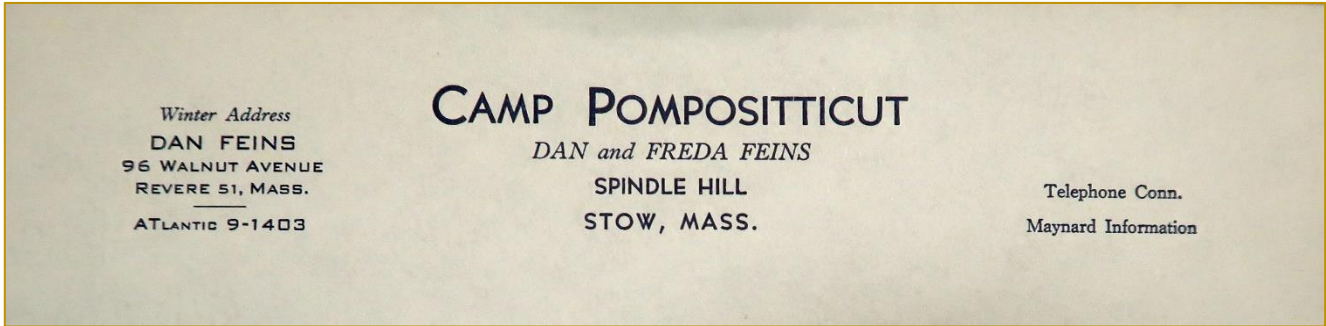
Amesbury, MA – Amesbury resident and professional actress Sheryl Faye's [unique program](#) about historic women is developing a loyal following among a surprising audience. Schools, Libraries, Historical Societies and Women's organization from Massachusetts to New York are repeatedly engaged with her live, one-woman, low-tech performances, an increasingly rare presentation format in today's digital multimedia age. The live performances are not only entertaining and educational, they also help audiences truly understand the profound positive impact these women have made in history, as well as their ties to New England.

Faye's numerous TV credits include a principal role in a recurring episode of PBS' "Fetch." She has trodden the floorboards of many a local and regional theatre and appeared with several acting companies, most recently Stagecoach Improv with which she works closely performing and writing sketch comedy and teaching for top businesses such as TD Bank, IBM, NYU, Philips and more. The [multifaceted actress](#) also has various film credits to her name, as well as voice over (including several Sony Play Station video game characters) and trade show presenter engagements.

Amidst all of this work, Faye finds immense fulfillment in seeing young students' faces light up as they connect with her when she portrays these women with just a few props, an audio recording and a slideshow. She has provided these programs for over 15 years and believes that these performances serve not only as history lessons, but as inspirational moments for impressionable youth. "I think it's so important to remind children that anything is possible in life, to make the most of your life as these women did, and most importantly to be kind to one another," she notes.

While portraying these women, Faye underscores their unwavering commitments to their causes in an era when women were pigeonholed into narrow categories. Whether referring to being an altruistic and outspoken entrepreneur in a man's world, or to becoming an active member of society despite being deaf, blind and mute in a time when such conditions relegated one to an asylum, she reminds the audiences that, "it's okay to be different and this world would be a boring place if we were all the same. Let's embrace each other's differences and learn from one another."

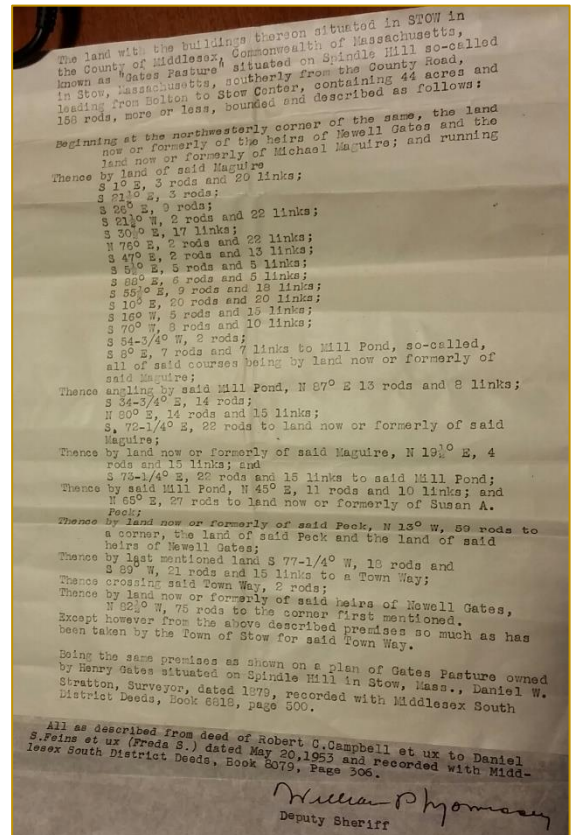
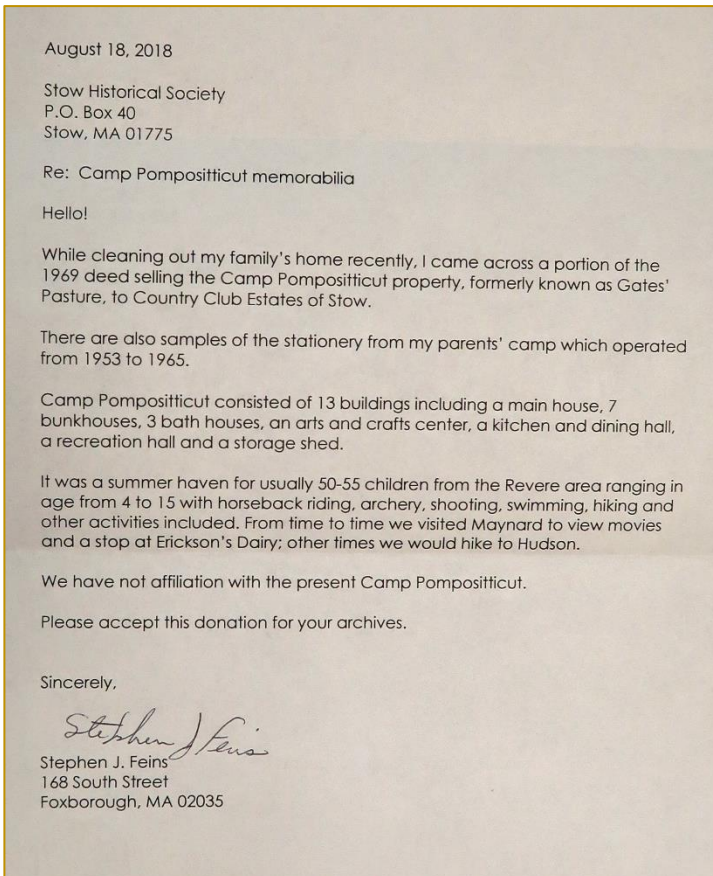
SHS's August Mail



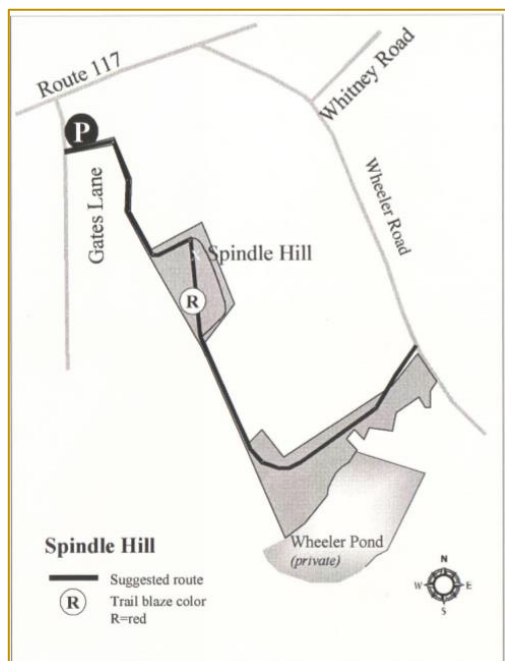
Camp Pompositticut?

Learning of the existence of Camp Pompositticut was a delightful summer treat for the SHS board.

The camp was located on Spindle Hill between 117 and Wheeler Road in "Gates Pasture."



Hiking trails on Stow's Spindle Hill in 2018



Who remembers Camp Pompositticut?

Louise Peacock: It was at the end of Gates Lane.

Bob Trumpolt: As a little kid, this [Spindle] hill was “mine” no one else was ever present when I explored and ate my lunches there. By the time Camp Pompositticut was there, I was employed by MIT Lincoln Lab.

John Peck: Camp Pompositticut was started by Daniel Feins in 1953 as a day camp during the summer. The property had been a summer getaway for the Campbell family and was called Argyle Pines

by the Campbells. The day camp utilized the dwelling at the site as the dining facility and arts and crafts center until more buildings were erected to house the campers overnight. I was hired to start the water pump at 6:00 am every morning to fill the excavated pool that was used for swimming lessons and free swimming during the day. The pump provided water from Wheeler Pond to the pool that was excavated in gravel but had no liner. The water seeped out every night to about one third of the volume. I remember that the first year the pump was started with a crank...and the engine was cranky to say the least. The next year the pump was equipped with an electric starter and a rechargeable battery...my life was much easier. As the camp developed, Mr. Feins put in a baseball diamond, brought out horses for trail rides and riding lessons, and built cabins to house the campers overnight. Trail rides were along old cow paths to the top of Spindle Hill on property that my father, William Peck owned. The camp expanded from the first years and became quite a well-run operation for the kids from the communities near Boston.

I used to go fishing at night at Wheeler Pond. I remember driving to the gate of the horse pasture, calling the horses over and riding one down to the pond where my canoe was tethered. I would ride one back to the gate after the fishing was done. I don't think Mr. Feins was any the wiser. While out on the water, I could hear the campers singing camp songs and generally having a good time.

Please share your memories of Camp Pompositticut!

Thank you, the SHS board
marilynzavorski@gmail.com